



Next Meeting Details
Topic: <i>"Tall bowl from thin board"</i> : An efficient method of developing a ~4" tall bowl from a standard ~1" thick board by cutting slanted concentric rings and stacking them.
Speaker: Dave Eaton
Date: February 3, 2011 6:30 p.m.
Learn & Turn
5:00 to 6:25 p.m.
Topic: <i>"Pull String Top with handle"</i> : Learn to make a great toy top that spins like crazy when you load it into an easy to make handle and pull a string to launch it. *** Please bring Roughing, Parting, Spindle and Skew tools. They will be quickly re-sharpened for you if needed. *** Starts at 5pm <u>sharp!</u>
Leader: Dave Eaton

"It is time to pay dues!"

President's Message

Charlie Croteau

We got through our first meeting just fine. Thank you to everyone who stayed on point. Makes my job easy. I'll be teaching in Boston on the 3rd so Reid will be in charge.

February is the month we visit shops. I'm planning to have my shop open on Feb. 6th at 1:00 for a Yankee Wood Swap. This should be a fun gathering where we can eat lots of good things that are bad for you and have some laughs sitting around the wood stove. The idea will be for each participant to bring a piece/chunk of wood worth \$5.00 or more wrapped in a bag or whatever. We'll do a Yankee swap and see who ends up with what. Hopefully there will be some fierce trading. Bring a chair and something to share for eats.

"No time is ever lost sharpening a tool."

Charlie

Minutes 1/06/2010

Eric Holmquist

Visitors / New members

Jeremy

Bill Oliver

Victor

Bill Ledger (Old member returning)

Charlie requested that all officers should provide me with upcoming event notes to ensure that nothing important is missed in the minutes. The officers were reminded to renew their AAW membership for 2011 if they had not already done so. To maintain our AAW chapter affiliation and insurance, all officers must be AAW members.

There were no prior minutes to accept.

Treasurer report:

Beginning balance	\$4238
Income	\$2825
Expenses	\$2750
Ending balance	\$4313

There was no external VP report

The Woodworking Show will occur at the Big E grounds from January 14-16. Rick requested volunteers to staff the booth, and needs someone to bring the club mini lathes. We will have a 10x20 booth.

Table of Contents	
President's Message and Minutes	1-2
Editor's Notes	2
Body Position at the Lathe	2
Buzzing Around the Sawmill	3
Rick Angus' Demo Pictures	3-4
Show and Tell Item Pictures	4-5
Show and Tell Pictures	6-7

Reid indicated a need for more Demos and Learn & Turn events to fill out the year.

There are new Malcolm Tibbits DVDs donated to the library.

The paper (books, magazines) library will be silent auctioned piecemeal over the next several months.

At a recent auction our members work to raise funds for Project Goodwill, \$3800 was raised.

The piece that CNEW will submit to the AAW will be a feather vessel by Frank White. A motion was passed for the chapter to pay the entry fee.

We need to finally get to making the improved dolly / cart system to move the large club lathe. Dave Eaton is working on this.

Several members had expressed interest in Avocado wood. Eric Holmquist discussed the idea with his supplier in California who is willing to mill and ship Avocado wood to us. Contact Robert Abbott at Hilltop & Canyon Farms, Carpinterea, CA. (805) 450-4163 or (805) 450-5751

February is open shop month, volunteers to host open shops so far are:

Reid G Sun February 20 at 1pm
Dave E Sat Feb 12^t & Sun 13 from 10am to 4pm.
Eric H Sun February 13 from 9am to 4pm (Using a metal lathe and milling machine to make woodturning jigs/tools)
Charlie C Feb. 6th at 1pm for Yankee Wood Swap.

Charlie will not be at the next meeting, so Reid or Rick will run that meeting.

Charlie thanked John Mills for providing the wood for the evenings silent auction and thanked Gene Spadi for his diligent efforts for years to provide wood.

Charlie will organize trips, details to follow:
Oval turning shop, Smith College – wood museum
Dave Eaton is organizing trips to a) Old Schwamb Mill (Oval Frame shop) targeting March and b) Bad Dog Burls in April.
Dominic will open a new meat store in Holden.

Al Gilburg showed off a new Sorby tool for cutting the internal grooves for Crush Grind pepper mills.

Body Position at the Lathe: Don't Forget the Shoulders

By Joe McGill

Al's article last month about proper positioning at the lathe got me to think about the topic. A quick Internet review revealed that the general consensus calls for the lathe spindle height be level with the elbow. However, this seems to apply mainly to spindle turning, as others recommend a height 1" to 2" inches lower for bowl turning, and even lower for hollowing. While most of those who write on the topic do not address body posture while taking the measurement of elbow height, one Internet author suggests that you stand with your left hand draped over the right shoulder with the fingers wrapped around the shoulder, and then measure from there. Ellsworth takes it a step further in his "Ellsworth on Woodturning" when he points out that one needs to take the body measurements while cognizant of the position of the knees. He points out that one needs to stand with the knees flexed as they are when actually turning in order to get an accurate measurement, and cautions not to do so with the knees locked or the height of the elbow will be higher than actual. While this is very good advice and Ellsworth spends considerable time discussing positioning and wear and tear on the torso, no where have I found a reference to the shoulders.

I have been practicing Forrest yoga for a number of years. As it is the only type of yoga with which I am familiar, I do not know if other types of yoga place as much emphasis on shoulder position, but Forrest yoga places significant emphasis on the shoulders in most of the yoga positions. The emphasis is on moving the shoulder blades down the back, and strengthening the muscles that envelop the shoulder blades. When setting up my lathe height I took the measurement with my shoulders low down my back and this resulted in about a 2" difference in elbow height. Also, while turning I consciously attend to the position of my shoulders, making sure they are as far down as possible, never hunched toward the ears. While not certain, I attribute this position to a complete absence of muscle tightness in my torso regardless of how many hours I spend at the lathe. Now, if I could only solve the problems of foot cramps the day after six or so hours of turning!

Editor's Notes

Ron Rocheleau

Take some time to share your knowledge, ideas, or book/DVD reviews with the club by writing an article for the newsletter.

Buzzing around the sawmill

by Dave Eaton

A couple months ago I had the pleasure to go to Buzz Hawes house to join him and Dominic Leroux for a wood cutting party. He and Dom were using a wood miser sawmill to cut wood from Buzz's enormous pile of logs. When I arrived on this Saturday around midday I was greeted by both Dom and Buzz and an old CNEW friend I hadn't seen for a while, Paul Charbonneau. The first piece of wood I was going to see Buzz cut was going to be a wonderful piece of butternut. The log of wood was approximately 16 inches in diameter, and perhaps 14 feet long. While I chatted with Paul, Buzz drove his forklift over to his pile and once positioned next to the log, Dom reached over to the chain hanging from the forks and positioned a pincher log tongs onto the log. As Buzz raised the forklift front end, the chain lifted the log well off the ground for transport over to the sawmill.

proximately 10 seconds. A lot quicker than I could've done with my chainsaw. Next Buzz used the machine's hydraulics and Dom's muscle power to rotate the log 90° and repeated the process to make another flat on the log. The procedure continued until all four sides of the log had been trimmed and it was turned into a rough cut, square, long timber. The next step was simply to set a new depth of cut on the sawmill and continue the process with ease. Buzz cut several flat wide boards approximately 5/4 thicknesses. He also quickly cut me a few 4 x 4's of the same butternut wood. This all took perhaps 30 min. from the time I showed up.



Having the right equipment as we know is half the battle. Once the log was near the sawmill, Dom cut it in half with a chainsaw so it would fit easily into my car in about 5 foot lengths once processed. With one section on Buzz's sawmill, he expertly manipulated the hydraulic controls to position the log in place for best sawing. He next started the big, big bandsaw blade on the sawmill and proceeded down the log to cut a flat on one surface. The process of cutting the length of this six or so foot long log took ap-



CNEW Skew: Volume 24; Number 2, February 2011

It became increasingly clear to me as I continued to add more and more wood to my car's trunk and backseat over and over again that I had to stop Buzz from cutting and Dom from helping me load my car. I had a generous load already. Funny thing... Dom kept chuckling as he added to my load of wood... maybe there was something I was missing?



Once we were finished for the day, I ended up getting even a few more pieces of walnut stuffed into my car just to fill up some of the vacant airspace that Dom thought I should not have. I then drove away waving out the window to Buzz as I left, my car's engine groaning against the weight of my newly acquired wood which was now on its way towards joining my collection at home and sit for a drying period before use. Thanks again Buzz and Dom for all the beautiful wood and an enjoyable day!



Remember CNEW members; Buzz and Dom have offered any club member all the wood they want if they would just show up on some Saturday like I did. I was lucky enough to receive not only the butternut, but also some beautiful yellow birch and some deep dark brown walnut. I knew these gentlemen had very generous hearts but on this day the springs and shocks and fully loaded trunk and back seat of my poor car certainly proved it.



After the wood cutting I got a quick tour of Buzz's house and shop where he has a collection of marvelous bowls, some other woodworking pieces of art, and a basement workshop complete with a Voisey Buse-36 heavy duty lathe. These lathes are awesome for making anything from precision smaller turnings to massive bowls given their excellent design and manufacture as well as their hefty weight of ~1,200 pounds.





**Pictures from Rick Angus'
Chucking Methods Demonstration**



Success!



Making a jamb chuck to hold a bowl by the rim.



Chuck holding reinforced with clear plastic wrap or packing tape to ensure chuck will hold during bottom shaping.



Positioning and holding the bowl for bottom turning.



Setting up a vacuum chuck.

Pictures from Show & Tell



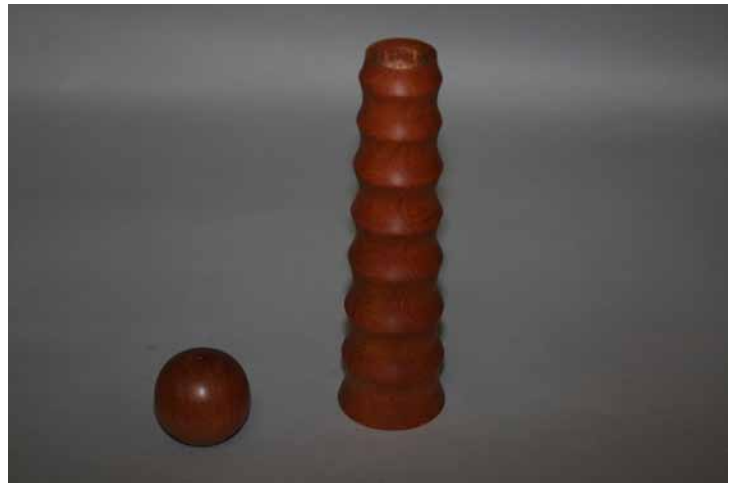
Art Piece By Reid Gilmore



Bird's Nest by Frank White



Natural Edge Bowl By Jeremy



Pepper Mill by Alan Gilburg



Bowl By Alan Gilburg



Serving Dish by Charles Zucker



Segmented Plate by Steve Reznek

Bleached Bowl by Steve Reznek



Wand by Peter Wilcox

Pierced Bowl by Eric Holmquist



Turned Pyrography by Frank White



Table by John Mills



Club Treasures from the Past



Dave Eaton won 1st prize at the recent New England Woodworking Shows "Show Off Showcase" with a Tall Baltic Birch laminated ring segmented vase, titled "Very Wavy Vessel"! He will be doing the demo on how to make this type of object next meeting too.

Congratulations Dave!

Show your fellow woodworkers what you can do – We all benefit when we share!

– Graham Blackburn

Someone from CBS 3 Springfield stopped by to interview Eric Holmquist at the Woodworking Show on Sunday.

See the video at: <http://www.cbs3springfield.com/news/local/Thousands-Come-to-Big-E-for-Woodworking-Show-113854229.html>

The bottle stopper turning is Eric and the small hollow form turning is Frank White.



Membership Application

To join or renew membership, please complete this form and a check made payable to CNEW and bring it to a CNEW meeting or mail it to:

Treasurer, Central New England Woodturners
c/o Mike Peters
3 Forge Lane
Sutton, MA 01590

Annual dues: \$30 including e-mail delivery of newsletter; \$35 for postal delivery of newsletter.



Central New England Woodturners
A Chapter of the American Association of Woodturners



Find us on the web @ www.cnew.org

Membership Application

To join or renew membership, please complete this form and a check made payable to CNEW and bring it to a CNEW meeting or mail it to:

Treasurer, Central New England Woodturners
c/o Mike Peters
3 Forge Lane
Sutton, MA 01590

Annual dues: \$30 including e-mail delivery of newsletter; \$35 for postal delivery of newsletter.

Name: _____

Please check appropriately below

Street: _____

New Member

City: _____

Returning Member

State: _____ & Zip: _____

e-Mail Newsletter (\$30.00)

e-Mail: _____

Snail Mail Newsletter (\$35.00)

Please let us know of your interests:

How long have you been turning? _____

What programs would you like to see at meetings? _____

Would you like to demonstrate at a meeting? Yes/No If so, what topics do you offer? _____